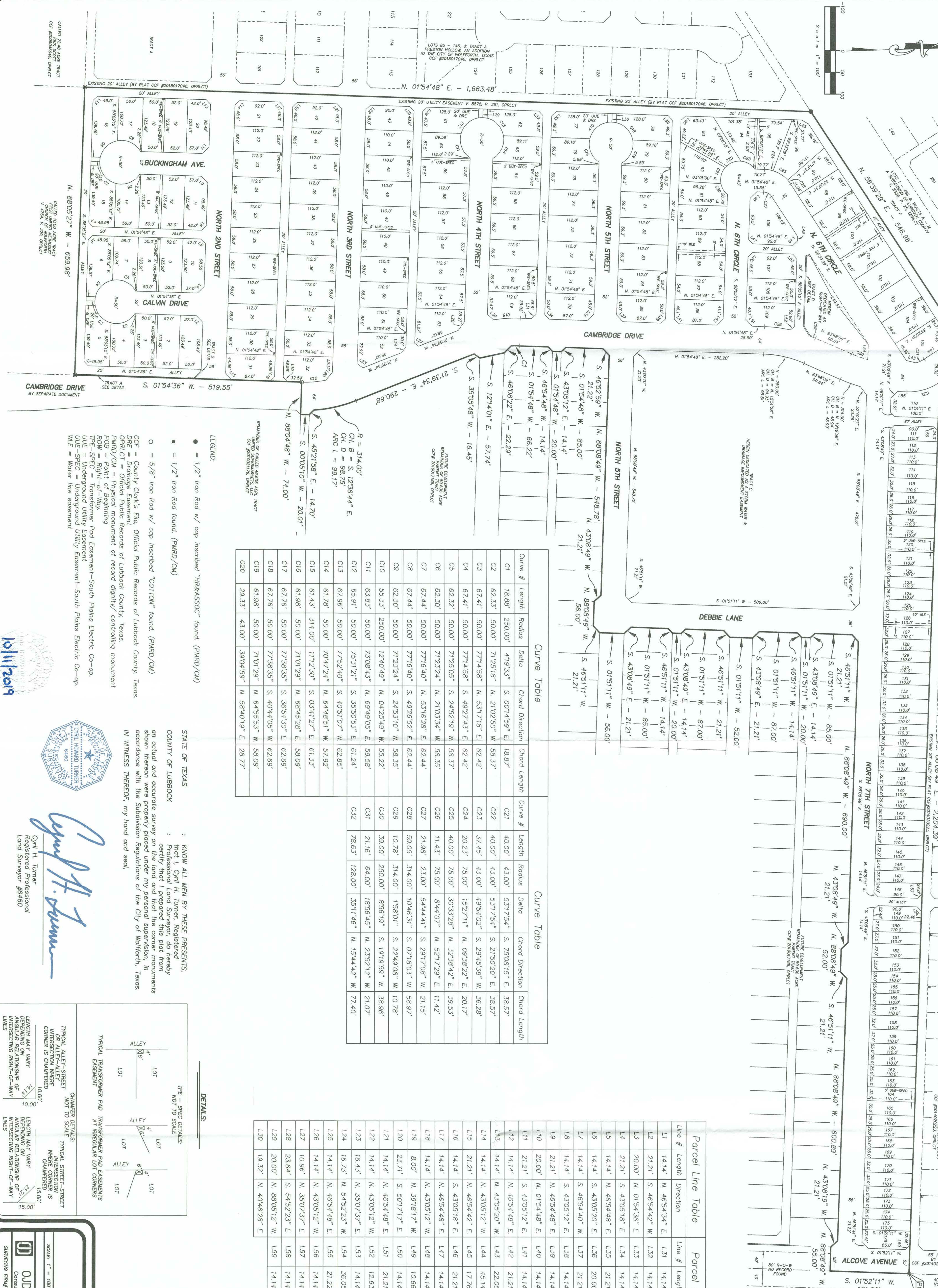


CORRECTED PLAT OF LOTS 1 - 176 & TRACTS A-D,
IRON HORSE ADDITION
 TO THE CITY OF WOLFFORTH, LUBBOCK COUNTY, TEXAS.

15th & 97-B
 15th & 97-A



Curve Table

| Curve # | Length | Radius | Delta | Chord Direction | Chord Length | Curve # | Length | Radius | Delta | Chord Direction | Chord Length |
|---------|--------|---------|----------|-----------------|--------------|---------|--------|---------|----------|-----------------|--------------|
| C1 | 18.88' | 250.00' | 419.33' | S. 00°14'59" E. | 18.87' | C21 | 40.00' | 43.00' | 531°54" | S. 75°08'15" E. | 38.57' |
| C2 | 62.33' | 50.00' | 479.33' | N. 21°02'50" W. | 58.37' | C22 | 40.00' | 43.00' | 531°54" | S. 21°50'20" E. | 38.57' |
| C3 | 67.41' | 50.00' | 771°458" | N. 53°17'18" E. | 62.42' | C23 | 37.45' | 43.00' | 495°402" | S. 29°45'38" W. | 36.28' |
| C4 | 67.41' | 50.00' | 771°458" | S. 49°27'43" E. | 62.42' | C24 | 20.23' | 75.00' | 152°211" | N. 08°38'22" E. | 20.17' |
| C5 | 62.33' | 50.00' | 712°505" | S. 24°52'19" W. | 58.37' | C25 | 40.00' | 75.00' | 303°328" | N. 32°38'42" E. | 39.53' |
| C6 | 62.30' | 50.00' | 712°505" | N. 21°03'34" W. | 58.35' | C26 | 11.43' | 75.00' | 84°407" | N. 52°17'29" E. | 11.42' |
| C7 | 67.44' | 50.00' | 771°640" | N. 53°16'40" E. | 62.44' | C27 | 21.98' | 23.00' | 54°444" | N. 29°17'08" W. | 21.15' |
| C8 | 67.44' | 50.00' | 771°640" | S. 49°26'52" E. | 62.44' | C28 | 59.05' | 314.00' | 10°48'3" | S. 07°18'03" W. | 58.97' |
| C9 | 62.30' | 50.00' | 712°505" | S. 24°52'19" W. | 58.35' | C29 | 10.78' | 314.00' | 1°5801" | S. 22°49'08" W. | 10.78' |
| C10 | 55.33' | 250.00' | 1240'49" | N. 04°25'49" W. | 55.22' | C30 | 39.00' | 250.00' | 8°5619" | S. 19°19'59" W. | 38.96' |
| C11 | 63.83' | 50.00' | 7308'43" | N. 69°49'05" E. | 59.58' | C31 | 21.16' | 64.00' | 18°5645" | N. 23°52'12" W. | 21.07' |
| C12 | 65.91' | 50.00' | 753°121" | S. 35°50'37" E. | 61.24' | C32 | 78.63' | 128.00' | 35°1146" | N. 15°44'42" W. | 77.40' |
| C13 | 67.96' | 50.00' | 775°240" | S. 40°51'07" W. | 62.85' | | | | | | |
| C14 | 61.78' | 50.00' | 7047'24" | N. 64°48'51" W. | 57.92' | | | | | | |
| C15 | 61.43' | 314.00' | 1112'30" | S. 03°41'27" E. | 61.33' | | | | | | |
| C16 | 61.98' | 50.00' | 7101'29" | N. 68°45'28" E. | 58.09' | | | | | | |
| C17 | 67.76' | 50.00' | 773°355" | S. 36°54'30" E. | 62.69' | | | | | | |
| C18 | 67.76' | 50.00' | 773°355" | S. 40°44'05" W. | 62.69' | | | | | | |
| C19 | 61.98' | 50.00' | 7101'29" | N. 64°55'53" W. | 58.09' | | | | | | |
| C20 | 29.33' | 43.00' | 3904'59" | N. 58°40'19" E. | 28.77' | | | | | | |

Parcel Line Table

| Line # | Length | Direction | Line # | Length | Direction |
|--------|--------|-----------------|--------|--------|-----------------|
| L1 | 14.14' | N. 46°54'34" E. | L31 | 14.14' | S. 43°05'12" E. |
| L2 | 21.21' | S. 46°54'42" W. | L32 | 14.14' | N. 46°54'48" E. |
| L3 | 20.00' | N. 01°54'36" E. | L33 | 14.14' | N. 43°05'12" W. |
| L4 | 14.14' | S. 43°05'18" E. | L34 | 14.14' | N. 46°54'48" E. |
| L5 | 14.14' | N. 46°54'48" E. | L35 | 21.21' | S. 43°05'12" E. |
| L6 | 14.14' | S. 43°05'20" E. | L36 | 20.00' | N. 88°05'12" W. |
| L7 | 14.14' | S. 46°54'40" W. | L37 | 21.21' | S. 46°54'48" W. |
| L8 | 14.14' | S. 43°05'12" E. | L38 | 14.14' | S. 43°05'12" E. |
| L9 | 21.21' | N. 46°54'48" E. | L39 | 14.14' | N. 46°54'48" E. |
| L10 | 20.00' | N. 01°54'48" E. | L40 | 14.14' | N. 43°05'12" W. |
| L11 | 21.21' | S. 43°05'12" E. | L41 | 14.14' | S. 46°54'48" W. |
| L12 | 14.14' | N. 46°54'48" E. | L42 | 21.21' | S. 43°05'12" E. |
| L13 | 14.14' | N. 43°05'20" W. | L43 | 22.05' | S. 13°47'04" W. |
| L14 | 14.14' | N. 43°05'12" W. | L44 | 45.14' | N. 33°20'34" W. |
| L15 | 21.21' | N. 46°54'42" E. | L45 | 17.76' | N. 29°17'08" E. |
| L16 | 14.14' | S. 43°05'18" E. | L46 | 21.21' | S. 46°54'48" E. |
| L17 | 14.14' | N. 46°54'48" E. | L47 | 14.14' | N. 46°54'48" E. |
| L18 | 14.14' | N. 43°05'12" W. | L48 | 14.14' | S. 43°05'12" E. |
| L19 | 8.00' | N. 39°18'17" W. | L49 | 10.66' | N. 88°05'12" W. |
| L20 | 23.71' | S. 50°17'17" E. | L50 | 14.14' | S. 43°05'12" E. |
| L21 | 14.14' | N. 46°54'48" E. | L51 | 21.21' | S. 46°54'48" W. |
| L22 | 14.14' | N. 43°05'12" W. | L52 | 12.63' | N. 37°14'34" W. |
| L23 | 16.43' | N. 35°07'37" E. | L53 | 14.14' | N. 46°54'48" E. |
| L24 | 16.73' | N. 54°52'23" W. | L54 | 36.05' | S. 87°41'50" E. |
| L25 | 14.14' | N. 46°54'48" E. | L55 | 21.22' | S. 01°51'11" W. |
| L26 | 14.14' | N. 43°05'12" W. | L56 | 14.14' | N. 46°54'48" E. |
| L27 | 10.96' | N. 35°07'37" E. | L57 | 14.14' | N. 43°08'49" W. |
| L28 | 23.64' | S. 54°52'23" E. | L58 | 14.14' | N. 46°54'48" E. |
| L29 | 20.00' | N. 88°05'12" W. | L59 | 14.14' | S. 43°05'19" E. |
| L30 | 19.32' | N. 40°46'28" E. | | | |

LEGEND:

- = 1/2" Iron Rod w/ cap inscribed "H&K&SSOC" found. (PMRD/CM)
- ✱ = 1/2" Iron Rod found. (PMRD/CM)
- = 5/8" Iron Rod w/ cap inscribed "COTTON" found. (PMRD/CM)

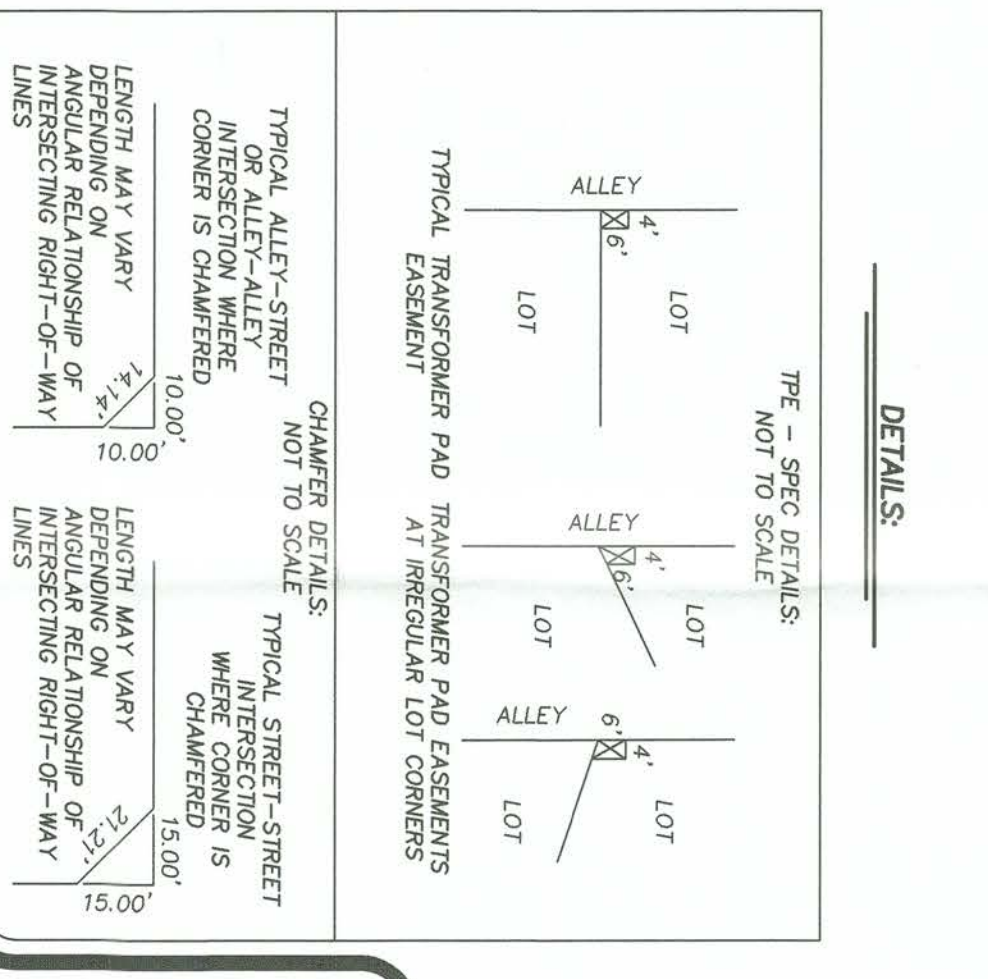
DEFINITIONS:

- CCF = County Clerk's File, Official Public Records of Lubbock County, Texas.
- DCE = Drainage Easement
- OPRCLT = Official Public Record of Lubbock County, Texas.
- PMRD/CM = Physical Monument of record dignity/controlling monument
- FOU = Foot of Beginning
- TRF = Transformer
- TRF-SPEC = Transformer Pad Easement-South Plains Electric Co-op.
- UUE = Underground Utility Easement
- UUE-SPEC = Underground Utility Easement-South Plains Electric Co-op.
- WLE = Water Line Easement

STATE OF TEXAS
 COUNTY OF LUBBOCK

KNOW ALL MEN BY THESE PRESENTS,
 that I, Cyril H. Turner, Registered Professional Land Surveyor, do hereby certify that I prepared this plat from an actual and accurate survey on the land and that the corner monuments shown thereon were properly placed under my personal supervision, in accordance with the Subdivision Regulations of the City of Wolfforth, Texas. IN WITNESS WHEREOF, my hand and seal.

Cyril H. Turner
 Registered Professional Land Surveyor #64460



FINAL PLAT

SCALE: 1" = 100'

APPROVED BY: CHT

DATE: 06-28-2006

OLD Engineering, L.P.
 Consulting Engineers & Surveyors

328 E. AM. 86-731-2300
 WILSON, TEXAS 79395

DRAWING NUMBER: 101112019